

## IN DEPTH ANALYSIS

**NAME :** **KINDERBOERDERIJ DE ZEVEN TORENTJES** *(THE SEVEN TOWERS CHILDREN'S FARM)*

⇒ Linked with City Bruges

**ADRESS :** Canadaring 41, 8310 Brugge, Belgium

**CONTACT :** Delphine Roussel [delphine.roussel@brugge.be](mailto:delphine.roussel@brugge.be)

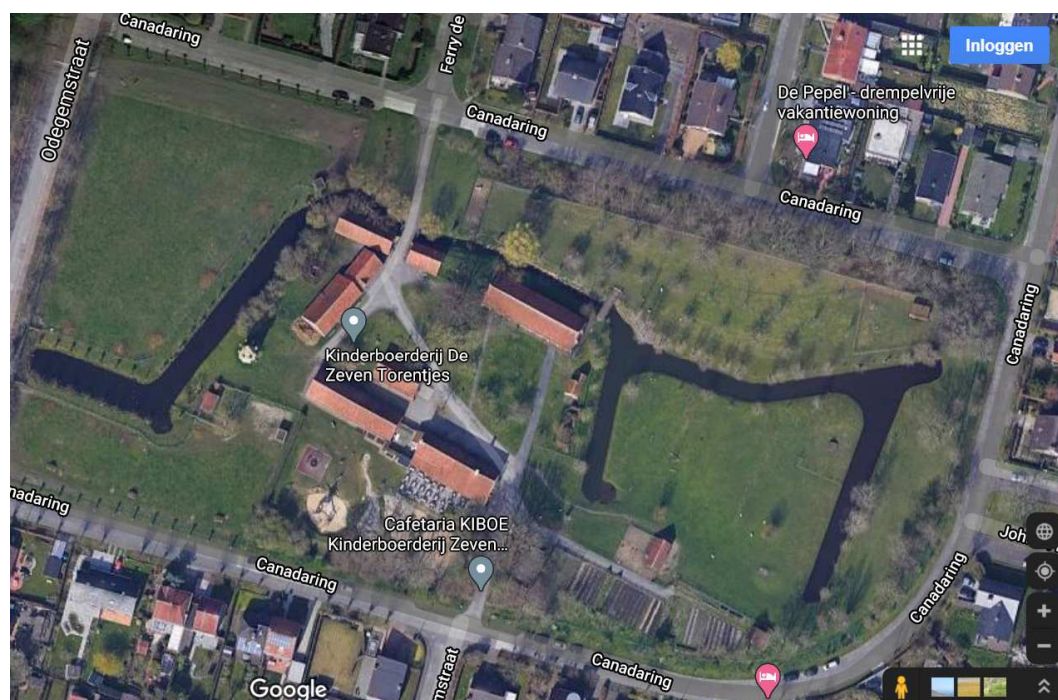


**WEBSITE :** <https://www.brugge.be/over-de-kinderboerderij>

**FACEBOOK :** <https://www.facebook.com/zeventorentjes>

**DESCRIPTION :** The farm has seven separate buildings grouped around a yard and dating from the 17th, 18th and 19th centuries. They are the main house (now used as catering establishment); a large stable; a barn with a carriage house (1660); pig and cattle stables; a bakery; a barn, originating from Dudzele; a dovecote tower. Because of their rich history, the farm and dovecote tower are protected as heritage.

Since 1979 the farm has been used as a children's farm, where children can get to know the many farm animals.



Detailed Ground map further in document.

## 1. WHAT DO WE OFFER ? TO WHO ? WHEN ? HOW ? AT WHAT PRICE ?

### a. A children Farm Program to schools :

- i. **educational programs** : workshops and activities to children from preschool (3th toddler – age 5-6y ) & primary school (1st degree – age 7-8y, 2nd degree – age 9-10y, 3th degree – age 11-12y).

Preschool (2,5 – 4 y) are offered a free visit.

An employee of the petting zoo will guide the group. The 'workshops' are educational, playful and interactive e.g. baking bread, making your own cheese,... The children who want to know the farm in an active way are offered a 'guided farm exploration'. If you want to get a full taste of real farm life, they offer 'the farm work' and spend a whole day on the farm. For example, combine a workshop with farm work. In the afternoon they can have a quiet picnic on the domain and maybe even play on the playground.

For many workshops teachers are offered an extensive post-processing bundle to be used in classroom afterwards.

- ii. Each schoolyear a program is developed and published to the schools.

Program 2020- 2021 : <https://www.brugge.be/kinderboerderij-kalender-schooljaar-2020-2021pdf>

Activities for schools and groups 2020-2021 Children's farm De Zeven Torentjes									
More information about the registration dates and content of the workshops: see brochure. Attention: per class max. 1 outdoor * and 1 indoor activity can be booked (at the registration moment)		Tip: combine an indoor activity with farm work, a whole day of fun is guaranteed! Picnic area possible at the petting zoo (please let us know in advance)		Canadaring 41, 8310 Assebroek • 050 35 40 43 kinderboerderij@brugge.be - www.brugge.be Cafeteria for reservations jonathan.derop@kiboe.be or 0491 718 291		All year round guided exploration (all ages) baking bread (not on Mon & Fri, not in February) farm animals in clay (for first and second degree) farm work renewed! (especially in winter * first to third degree) Always free to borrow and play at the petting zoo snail trail ( third toddler, first degree) farm game (third degree) bread box (for the classroom)			
	SEP	OCT	NOV	DEC	JAN	FEB	MAR	APR	MAY
third toddler			DISCOVERY WITH THE DONKEY * from 23/11 to 4/12 also for a second toddler			THE RABBIT			BEE GAME
			BAKING BREAD					BAKING BREAD	
first degree	FROM BEE TO FRUIT: MAKE APPLE Sauce OR CONFIT FROM VEGETABLE GARDEN TO SOUP	DISCOVERY WITH THE DONKEY * from 11/23 to 4/12		BIRDS IN THE WINTER	THE RABBIT	CHICKEN AND EGG Fry eggs		BEE GAME	BEE GAME
									CREATIVE WITH WOOL
	FARM WORK * == GUIDED EXPLORATION * == CLAY FARM ANIMALS * == FARM WORK * == GUIDED EXPLORATION * == CLAY FARM ANIMALS * == FARM WORK * == GUIDED EXPLORATION *								
			BAKING BREAD					BAKING BREAD	
second degree	FROM BEE TO FRUIT: MAKE APPLE Sauce OR CONFIT FROM VEGETABLE GARDEN TO SOUP	CUT BEET LANTARS * from 9/11 to 20/11	FROM BEE TO CANDLE	BIRDS IN THE WINTER	MAKE CHEESE from fourth grade	CHICKEN AND EGG Fry eggs	VERTICAL GARDENING		CREATIVE WITH WOOL
	FOOD AND KNOW (GE) 12 Oct-30 Oct == full day ==					CHICKEN AND EGG Baking pancakes all day			
	FARM WORK * == GUIDED EXPLORATION * == CLAY FARM ANIMALS * == FARM WORK * == GUIDED EXPLORATION * == CLAY FARM ANIMALS * == FARM WORK * == GUIDED EXPLORATION *								
			BAKING BREAD					BAKING BREAD	
third degree	FOOD AND KNOW (GE) 12 Oct-30 Oct full day		FROM BEE TO CANDLE		MAKE CHEESE		BIRTH AND FERTILIZATION		WOOL WEAVING all day WATER new!
	FARM WORK * == GUIDED EXPLORATION * == FARM WORK * == GUIDED EXPLORATION * == FARM WORK * == GUIDED EXPLORATION * == FARM WORK * == GUIDED EXPLORATION * == FARM WORK *								
			BAKING BREAD	BAKING MULTI-GRAIN BREAD			BAKING BREAD		

Brochure with more information : <https://www.brugge.be/kinderboerderij-brochure-schooljaar-2020-2021pdf>

Translation of brochure : see at the end.

iii. **Frequency : 5 days / week :**

- Monday to Friday (on reservation)
- Minimum = 25 children (except baking bread = 15)
- Each workshop = average 2,5 hours
- Schools can book :
  - o 1 activity
  - o combine 2 workshops
  - o 1 workshop with a 'guided exploration'
  - o 1 workshop with 'farm work'
  - o 1 workshop with free visit



Registration in forehand on specific days for each city & villages around Bruges. They rotate each year the village to give them all the same opportunities for booking. After 4 days, registration is open for schools outside the Bruges area.

In practice this means that they are fully booked after 5 days in September. During schoolyear 2019-2020 they received 2500 schoolchildren.

iv. **Staffing** – all payed by the city of Bruges :

- 1 FTE administrator: administration, marketing & communication, contact with schools
- 2,5 FTE educational assistants : organising workshops, joining and follow up classes during the day.
- 1 FTE farmer : farm work during the day (08h00 – 16h00). She doesn't live on the farm.
- 1 FTE 'concierge'. He doesn't get payed but can live in the farmhouse for free. : farm work during evening hours & weekends. He keeps an eye out during the weekend when visitors can walk freely through the domain.
- Volunteers offered a volunteer fee (30€/day)
- People with autism (in cooperation with the Spermalie Institute) who will come at the farm to help, whenever they like.

v. **Fee for participation / activity :**

- Schools & youth associations from Bruges city and villages around : free
- Schools & youth associations from other regions : 1 euro/person
- Adult associations / groups (max 20p) : 25 euro/person



**b. An Activity Program to individuals/groups :**

- i. This **activity program** on the farm for individuals & groups is mainly offered on Wednesday afternoon & weekends.

This program was normally a yearly program, but this has been changed this year to a 4 month brochure. It is a joined brochure with other activities organized with an nature association 'Natuurcentrum Beisbroek'.

Brochure Feb - Mai 2021 :

[https://www.brugge.be/activiteitenkalender\\_nckiboe](https://www.brugge.be/activiteitenkalender_nckiboe)

→ Translation of activities on the farm (see below)

ii. **Frequency :**

- Normally 1<sup>st</sup> Wednesday of month & weekends on specific days
- Registration in forehand

iii. **Staffing**

- Administration : same as Children Farm (1 FTE)
- Assistance : same as Children Farm (2,5 FTE) + volunteers if needed

iv. **Fee for participation :**

- 2 € / person.
- Some demonstration activities are free of charge e.g. shearing sheep.

v. **Summer camp special:**



- Mon 5 July – Fri 9 July 2021.
- Come and play, work, romp at the petting zoo for 5 days!
- Taking care of the animals, rolling up your sleeves in the vegetable garden, playing fun games, creative and cooking activities, ... something for everyone!
- A full week, each time from 9am to 4pm. 1h (free) before and after care is possible.
- For children from ° 2011 - ° 2014 ( 7 – 10 year of age)
- € 25 for the whole week. Bring your own picnic.



### c. Visit to the domain / farm :

Everybody can enter the domain and farm to walk around and have a look at the animals . They can follow **a designated route** or visit the playground. They can have something to eat/drink in the cafeteria (during opening hours which are independent from the farm, more information see lower)

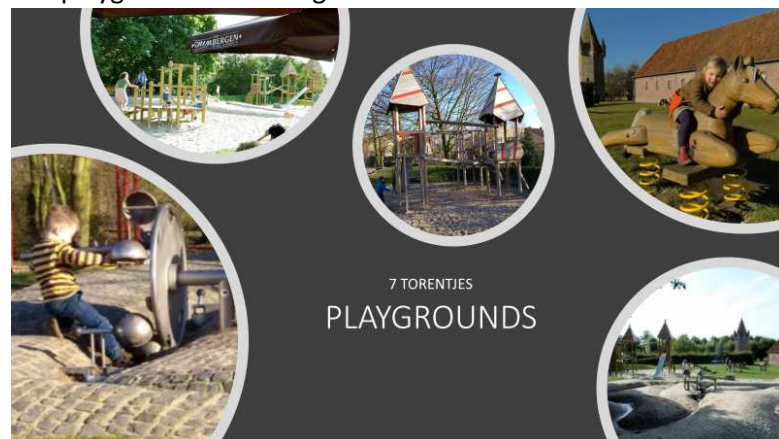
They also offer a **family photo search**. Ideal for families with children above 6 year. They wonder around looking to find the spots and answering questions. Makes it possible to discover secret places.



**Target group** : families with children (mostly up to 14years old)

**Playground** exists of 3 parts :

1. a water playground (unique in the city)
2. a sand playground for the little ones
3. a playground for the big kids



#### i. Frequency :

- Daily from 09h00 - Sunset

#### ii. Staffing

- 1 FTE farmer : during the day (08h00 – 16h00).
- 1 FTE 'concierge' : during evening hours & weekends.

#### iii. participation :

- free

#### d. Cafeteria :

KIBOE is the cafeteria of the 'Zeven Torentjes' Children's Farm in Assebroek, Bruges. Enjoy a drink and a nice snack on their sun terrace. They have a wide menu with various soft drinks, fruit juices, regional beers and coffee preparations. In addition to ice creams and pancakes, there are also tasty cakes & croques on their menu.

A beastly party : they are experts in party building! Whether it's a birthday party, an anniversary or a communion: you've come to the right place. The cafeteria seats max 26 participants.

Separately from the children farm they have their proper Facebook page :

<https://www.facebook.com/CafetariaKIBOEdeZevenTorentjes>

##### i. Frequency :

- open on Wednesday - Sunday : 11h30 – sunset
- during school & public holidays also open on Monday & Tuesdays
- ! their opening hours are not the same as the Children Farm !

##### ii. Staffing

- KIBOE is part of the social enterprise FOODSTEP. Footstep aims to create temporally employment for people, helping them to reintegrate into society due to behavioural problems.
- They have been granted the Cafeteria through a concession for 5 years. (until 2023)
- They also ask that parents are present for looking at the children during parties.

##### iii. Fee for participation 'Beastly Party' :

- €7 for each person (min 6 persons, max 26 persons)
- Get pancakes and 2 drinks
- Possibilities for printing free invitations : [https://2b6c1039-0c44-43cc-8a17-e33273d24b6d.filesusr.com/ugd/aaa940\\_60c2d6dcd73a4f57a5bf507e940c8063.pdf](https://2b6c1039-0c44-43cc-8a17-e33273d24b6d.filesusr.com/ugd/aaa940_60c2d6dcd73a4f57a5bf507e940c8063.pdf)
- In the future they are looking in working together with the Farm offering some workshops at the party.



## 2. RENTABILITY – EARNINGS / COSTS

- a. Total number of visitors are estimated around 7000/year (of which 2500 from schools ).
- b. At the moment all costs of the Children Farm (staffing, animal feed, buildings , administration, marketing & communication,...) is paid by the City of Bruges.
- c. Only the Cafeteria is rented out on a 5 year base and is fully operated by them.  
 ➔ this explains difference in opening hours between Cafeteria & public opening of the parc.  
 They look at changing this for the future when they launch the new concession for operation of cafeteria.

- d. Estimated **feed and care costs** of some of the animals :

*Taking into account:*

- \*dry ground in the stables (e.g. concrete, no soil + no raining inside)
- \*Basic feed prices in line with the market
- \*Regularly remove manure from between the straw
- \*Small amount of grass on the pastures
- \*No additional interventions by the veterinarian for diseases, treatment of goat hooves, etc.

*Rabbits (5), guinea pigs (3) = €279/year*

- 1/2 bale straw/month = 6/year = €21/year
- 1 bale of hay/month = 12/year = €48/year
- veterinarian: vaccinations= €120/year
- feed pellets: 180gr/day = 65kg/year = €90/year

*Dwarf goats (5)= €1235/year*

- 90 bales of straw/year = €315/year
- 1/2 bale of hay/day = 185/year= €740/year
- veterinarian: deworming + vaccinations = €120/year
- feed pellets: 0.5kg/day = €60/year

*Donkeys (2)= €2155/year*

- 1 bale of hay/day = €1460/year
- 180 days x 1/2 bale of straw = €315/year
- 3x hoe farrier €80 = €240/year
- veterinarian + deworming = €140/year

*chickens (5): €52/year*

- 250gr of grain/day = €36/year
- 2 bales of wood shavings x €8 = €16/year

### 3. MARKETING & COMMUNICATION

#### a. Facebook :

- i. They work with 2 Facebook accounts : 1 for the Children Farm and 1 for the Cafeteria.
- ii. For the Cafeteria is this the main marketing tool.
- iii. Facebook is used to show extra organisations , changes in planning, Corona, ...

- b. The Children Farm also uses **posters** to hang out in public buildings and for schools, together with the 2 **brochures** ( for schools & families) . Brochure for schools available half of August. For some activities they develop flyers available in libraries and public buildings.

#### c. Website :

- i. The website gives you the total overview.

- d. They don't focus on Tourism, only to the schools & families from the region, offered activities by the city.





#### 4. ANIMALS AT THE FARM

- rabbits
- guinea pigs
- dwarf goats
- donkey / horse
- chickens
- Pigeons / geese
- Cow-calf
- Sheep
- pigs

#### Minimum required area for farm animals

*Drawn up based on legally valid info*

Animal	Stable floor area per animal	Pasture/outside area per animal	Best together/only*
Goat	1,75m <sup>2</sup>	?	Min.4
Chicken	0,75m <sup>2</sup>	2 m <sup>2</sup> (but to preserve grass, best 5m <sup>2</sup> ) With climbing opportunities.	Min.3
Rabbit	0,75m <sup>2</sup>	2m <sup>2</sup> for small, 3m <sup>2</sup> for medium, 4m <sup>2</sup> for large rabbit	Can be alone. If together, definitely put spacious enough. Best no males together.
Guinea pig	80x50x30 cm (l-b-h)	Not needed	Min.2 (males together is no problem, as long as there are no sows (smell) in the neighbourhood)
donkey	(2x height) m <sup>2</sup> (min.10m <sup>2</sup> for 2 donkeys)	Min. 1000m <sup>2</sup> for 2 donkeys	Min.2 Definitely not alone.

\*Not legally defined. From my own experience and according to animal behavior studies.

## **5. DO – DON'TS – BOTTLENECKS**

### **a. Splitting cafeteria & children farm activities :**

The differences in open hours, definitely misses income & possibilities for visitors to sit down and have something to drink / eat. Today the mission of Foodstep is to guide people with difficulties, and the cafeteria is a tool for doing this. They are not into commercialising there business. Their mission differs from the one of the Children Farm. It was a political (not commercial) decision when this started.

### **b. Yearly brochures :**

A yearly program works for schools because they plan on forehand. A yearly program for families & friends seems to loose impact when year continuous. That's why they decided to change this from 2021 into 3 brochures of 4 month each. They also combine this brochure with 'the nature-centre'.

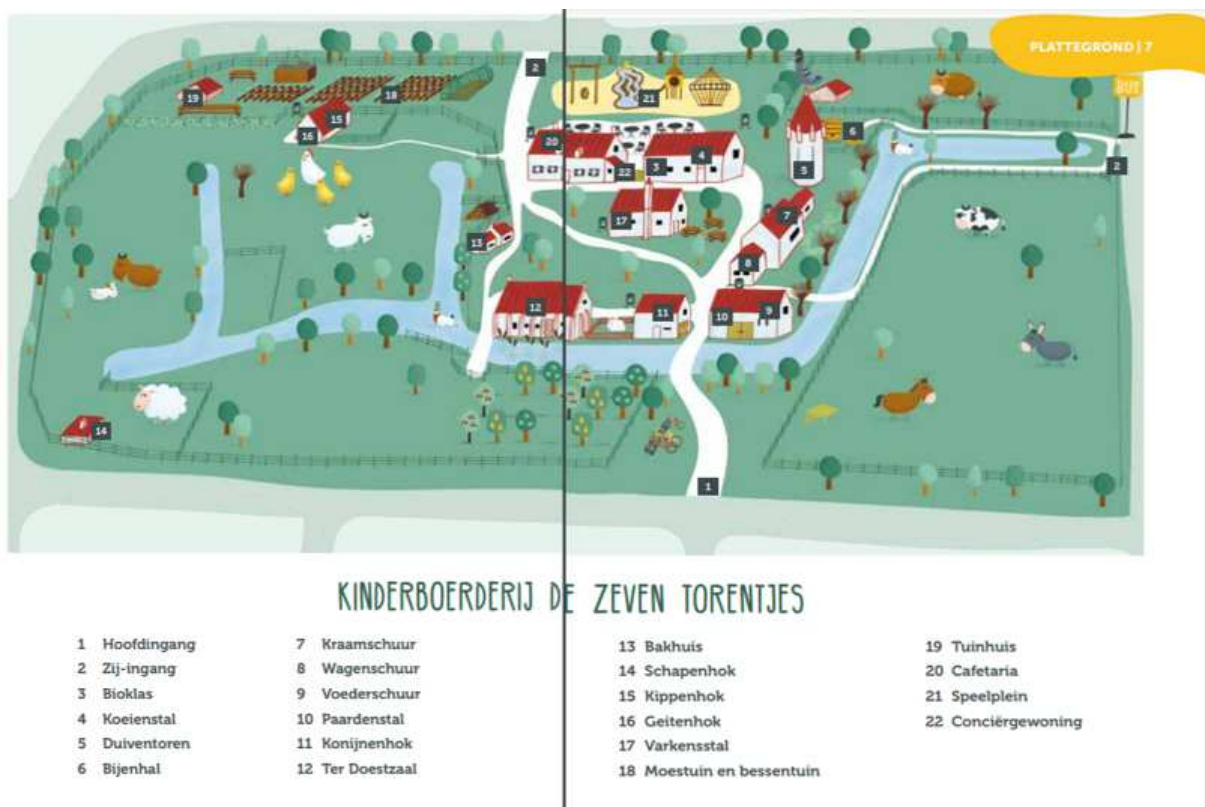
### **c. Feeding :**

They don't allow visitors feeding the animals, due to problems wit health caused by bad feed. Only schoolchildren can feed the animals under guidance.

## 6. EXTRA PICTURES



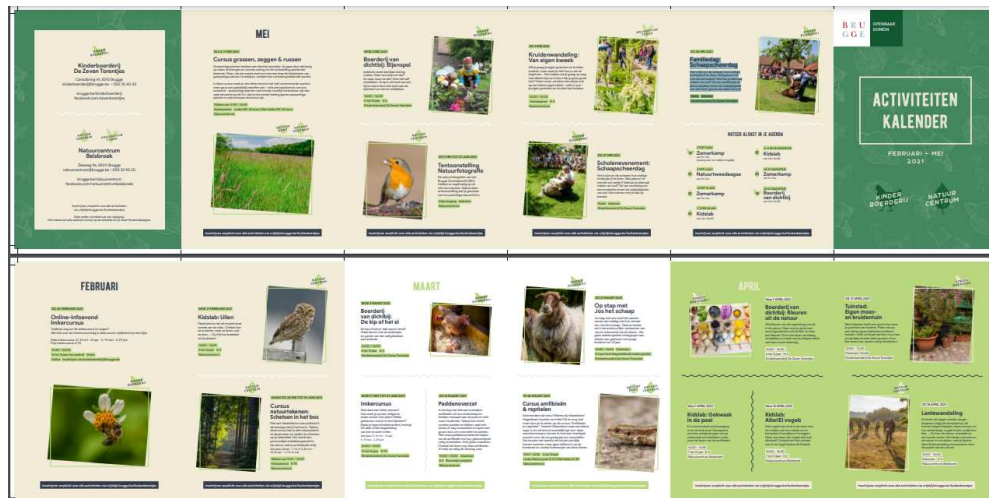
## 7. GROUNDMAP



- |                   |                    |
|-------------------|--------------------|
| 1. Main entrance  | 2. Side entrance   |
| 3. Bio class      | 4. Cowshed         |
| 5. Dove tower     | 6. Bee hall        |
| 7. Maternity barn | 8. Wagon Barn      |
| 9. Feeding barn   | 10. Horse Hall     |
| 11. Rabbit hutch  | 12. Ter Doest hall |

- |                  |                                       |
|------------------|---------------------------------------|
| 13. Baking house | 14. Sheep coop                        |
| 15. Chicken coop | 16. Goat shed                         |
| 17. Pig shed     | 18. Vegetable garden and berry garden |
| 19. Garden shed  | 20. Cafeteria                         |
| 21. Playground   | 22. Caretaker's house                 |

## Translation Brochure families / friends :



WOE 3 MAART 2021

### Boerderij van dichtbij: De kip of het ei

De kip of het ei. Wat was er eerst? Maak kennis met de kuikentjes en geniet van een zelfgebakken pannenkoek.

14:00 - 16:00

6 tot 12 jaar € 2

Kinderboerderij De Zeven Torentjes



### Farm up close: The chicken or the egg

The chicken or the egg. Which came first?

Meet the chicks and enjoy a homemade pancake.

WOE 17 MRT TOT 29 JUNI 2021

### Imkerkursus

Wat doet een imker precies? Hoe werk je op een veilige en leuke manier met bijen? Welke geheimen vind je in een bijenkorf? Maak je eigen kinderboerderij-honing! Dit alles onder begeleiding van een ervaren imker.

Alle data: 17, 31 mrt - 21 apr - 5, 19 mei - 2, 29 juni

14:00 - 16:30

12 tot 16 jaar € 70

Kinderboerderij De Zeven Torentjes

### Beekeeper Course

What exactly does a beekeeper do? How do you work with bees in a safe and fun way? What secrets can you find in a beehive?

Make your own farms' honey! All this under the guidance by an experienced beekeeper.



ZO 21 MAART 2021

### Op stap met Jos het schaap

Je mag met ons mee! We starten samen de middag met het verhaal van Jos het schaap. Daarna treden we in de avontuurlijke voetsporen van Jos en ontmoeten we de dieren. We gaan enkele speelse uitdagingen aan. Ideaal voor gezinnen met jonge kinderen tot 10 jaar.

14:00 - 16:30 Gezinnen

€ 2 per kind (begeleidende ouders gratis)

Kinderboerderij De Zeven Torentjes

### On the go with Jos the sheep

You can come with us! We start the afternoon together with the story of Jos the sheep. Then we follow in the adventurous footsteps of Jos and meet the animals. We take on some playful challenges.

Ideal for families with young children up to 10 years.



**Farm from close by: Colours from nature**

All the colours of the rainbow can be found in nature. But did you know that with some plants you can also Colour fabrics and food? Come and discover it this Afternoon and make with your homemade paint a Beautiful drawing.

**Garden City: Your own vegetable and herb garden**

Not everyone has a large garden where you can grow vegetables. But even on a small area you can grow. Even vertically on a wall can you can grow delicious herbs. Come here to learn how, along with your child(ren).

**Farm from close by: Bee game**

Everyone knows that bees make honey. But how do they do it? And where do they do it? Come and find out for yourself. Take on the role of a bee and zoom through the game to the hive to discover it.

**School Event: Sheep Shearing Day**

It's time to take off the sheep's woolly winter coat. What happens with the wool afterwards? What can you make from wool? Numerous workshops and demonstrations show the versatility of wool. Come and visit with your class.

**Family Day: Sheep Shearing Day**

It's time to take off the sheep's woolly winter coat. What happens with the wool afterwards? What can you make from wool? Numerous workshops and demonstrations show the versatility of wool. Come and take a look!

For workshops you have to inscribe in front (max 20-30 persons each). For events people can come if the want (depending on the weather or other activities they accommodate 100 - 400 people).

## Translation : BROCHURE SCHOOLS 2020-2021

### 1 |

#### Activities for preschool and primary education

SCHOOL YEAR 2020-2021



### 3 |

He is there again! The activity calendar of De Zeven Torentjes Children's Farm (school year 2020-2021). Not only families and tourists find their way to the Children's Farm, but also numerous classes, schools and groups.

Did you know that in the 2019-2020 school year, we were able to receive no fewer than 7,000 children in class? It is therefore a tradition for most classes to attend an annual workshop at the Children's Farm.

Every year the offer looks a bit different, so also now! But rest assured, the fixed values (such as baking bread, making your own cheese, ...) will remain! This year you can get acquainted with our new, 'spectacular' workshop on water, especially for the third degree. The 'farm work' has also been given a new look: our new farmer (Laura) takes your group in tow for half a day and turns your students into accomplished farmers or peasant women.

Of course you can also pay us a free visit. Feel free to borrow our Snail Track or Farm Game for free. A picnic on the domain is also always possible.

Curious about what else we have to offer? Then take a quick look at the brochure and the calendar and book in time!

I hope to see you soon!



### 4 |

#### Welcome to the petting zoo!

A class, a few classes together or a (leisure) group: you are always welcome at the petting zoo!

On the one hand, we have numerous workshops. An employee of the petting zoo will be happy to give it to your group. The workshops are educational, playful and interactive. The children get to know the farm in an active way. We also offer a guided farm exploration. If you want to get a full taste of real farm life, request the farm work or spend a whole day on the farm. For example, combine a workshop with farm work. In the afternoon you can have a quiet picnic on the domain and maybe even play on the playground.

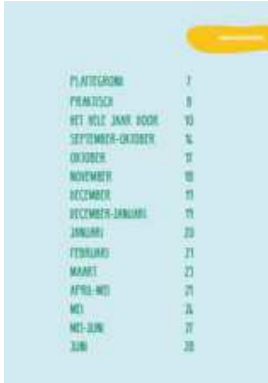
On the other hand, you can visit the farm freely, show your group around and / or play a game. You can borrow a farm story ('The Snail Trail') or play 'The Farm Game'. In this brochure you will certainly find the suitable activity for your class, with accompanying explanation!

Check the calendar for an overview of this school year and the bookings.

Whatever you choose, a visit to the petting zoo is an exciting and educational nature experience for young and old.

## 5 | TABLE OF CONTENTS

Map	7
Practical	8
All year round	10
September-October	16
October	17
November	18
December	19
December-January	19
January	20
February	21
March	23
April-May	24
May	26
May-June	27
June	28



PLANTAGE	7
PRÄGISCHE	8
REI NELLE JAHRE BOOK	10
SEPTEMBER-OCTOBER	16
OCTOBER	17
NOVEMBER	18
DECEMBER	19
DECEMBER-JANUARI	19
JANUARI	20
FEBRUARI	21
MÄRZ	23
APRIL-MAI	24
MAY	26
MAY-JUNE	27
JUNE	28

## 6 | MAP

- 1 Main entrance
- 2 Side entrance
- 3 Bio class
- 4 Cowshed
- 5 Pigeon tower
- 6 Bee hall
- 7 Maternity shed
- 8 Wagons shed
- 9 Feed shed
- 10 Horse shed
- 11 Rabbit hutch
- 12 Ter Doestzaal



## MAP | 7

- 13 Bakhuis
- 14 sheep barn
- 15 Kippenhok
- 16 Geitenhok
- 17 pig shed
- 18 Vegetable garden or garden berries
- 19 Garden house
- 20 Cafe
- 21 play area
- 22 Concierge Property





## 8 | PRACTICAL

### How to register

Registration is only possible from the dates below. Don't forget to call in on the right day, places are in demand! To ensure that registration runs smoothly, dial-in for the 2020-2021 school year is spread out as follows:

- Wed 9 Sep** classes from Sint-Andries, Sint-Michiels, Zeebrugge and Lissewege
- Thu 10 Sep** classes from the Bruges city center
- Fri 11 Sep** classes off Assebroek, Sint-Kruis, Sint-Pieters, Sint-Jozef, Dudzele and Koolkerke
- Mon 14 Sep** Bruges groups and associations
- Tue 15 Sep** Non-Bruges classes, groups and associations

You can call on 050 35 40 43 from 8.00 am to 4.30 pm.

**Please note:** during the dial-in dates you can reserve per class max. 1 indoor and 1 outdoor activity.

After September 15, **everyone** can always register by telephone or via [kinderboerderij@brugge.be](mailto:kinderboerderij@brugge.be) (extra).

### Price of guided activity

Bruges schools and youth associations: free \*

Non-Bruges schools and youth associations: 1 euro per person \*

Adult associations / groups: 25 euro flat rate per group \*\*

The children receive what they have made home or eat it on the spot.

### Renewed

In many workshops you as a teacher receive an extensive post-processing bundle to use in the classroom.

\* Surcharge for activities with material consumption: 1 euro per person

\*\* Maximum 20 people



## PRACTICAL | 9

### Duration of activity

Approximately 2.5 hours per activity unless stated otherwise.

### Group size

Maximum 25 participants.

Minimum 15 participants for baking bread.

### Cancellation

If you cancel less than two weeks before the visit, an expense allowance will be charged for activities involving material consumption. You can cancel outdoor activities for free up to the day of the activity itself (eg. in bad weather). You can immediately set a new date.

### Come all day!

Turn your visit to the petting zoo into a day trip! For example, you can follow a workshop in the morning and a guided exploration or farm work in the afternoon. A top farm experience!

### Picnic

In good weather you can always have a picnic on one of our benches or on the grass. On request you can also have a free picnic indoors, if the organic class, theatre or sheep shed is available. Groups can also have a picnic in the cafeteria by ordering a drink.

Reserve a seat in the cafeteria in advance via [jonathan.derop@kiboe.be](mailto:jonathan.derop@kiboe.be) or 0491 718 291



## 10 | THROUGHOUT THE YEAR

*GUIDED BY US*

### Guided exploration

The chance to let the children experience farm life and animals up close. We visit and touch the animals under the guidance of an employee. In a casual way we learn the names and we label the sounds. Maybe you can even give them a treat ?

Hear the horse whinny and feel her stiff mane. In the vegetable garden, the children see carrots growing underground and beans growing on a bush. In the orchard they can smell blossoms or taste an apple. In the herb garden they discover a lot of flavours and scents.

The soft wool of the sheep passes through the hands and the curious goats come for a pet, while the rooster crows proudly.

In short, a visit to the farm is a unique mixture full of great memories and lasting learning.



## ALL YEAR ROUND | 11

*GUIDED BY US*

### Farm work Renewed!

**from the first year • especially in the winter period**

Farmer Laura (and an educational employee) takes you on an adventure on the farm for half a day. You help feed the animals and can get close to the animals. With your boots on and clothes that can take a beating, you help to muck out the stables. Driving the wheelbarrow is much better towards the end of the activity. There are also a lot of other jobs on the farm, where Laura can use your help. Taking care of animals, working in the vegetable garden, replenishing straw and hay, ... Always a unique experience!



## 12 | THROUGHOUT THE YEAR

*GUIDED BY US*

### Baking bread

**from third toddler • only on Tues, Wed and Thursdays (not in Feb) in December we bake multigrain bread with third degree.**

It is a classic on the farm: baking a sandwich in the wood oven. Together we discover the ingredients: what does yeast do to our bread and does it really need salt? Where does the flour and flour come from? Then we mix and knead that it is sweet pleasure. During a visit to the traditional wood oven, our dough can rise. After two hours we can proudly go home with our own baked bread.

### The bread box... with more about bread

We offer the opportunity to expand the theme throughout the classroom by means of our bread box. A deposit of 20 euros is required for borrowing.



## ALL YEAR ROUND | 13

*GUIDED BY US*

### Farm animals in clay

**first and second degree**

We get to know the farm animals up close. What do they look like, do they have hooves or feathers? What sound do they make and how do they feel? Then we get to work creatively and make farm animals in clay.





## 14 | THROUGHOUT THE YEAR

### TO GUIDE YOURSELF

#### Free farm exploration

The farm is free to visit every day, from sunrise to sunset. Most stables and meadows are freely accessible. Basic information can be found about the animals. As a teacher or supervisor, feel free to give a tour yourself! Our games are another approach to this exploration. The 'snail trail' and the 'farm game' are a fun angle to learn a lot about the animals.

#### Farm Game

**third degree (15-25 children) • • accompany himself free can take up to two hours prior booking • • ideal for fine weather loan date easy to change in bad weather**

The children sit in groups around a large board. There is a large die, there are pawns, a lot of knowledge questions and assignments. Participants enthusiastically scour the farm to find the answers. A kind of trivial pursuit, but completely dedicated to the farm. Educational and exciting.



## ALL YEAR ROUND | 15

### TO GUIDE YOURSELF

#### Snail trail

**toddlers - first grade • self-guided • free can take up to two hours • reservation in advance • ideal in good weather. Loan date easy to reschedule in bad weather**

Slime Snail does not know he has a house on his back. He visits all the animals to find a home. In this way he discovers that every animal has different habits, manners and a different physique. The Slijmpje Snail hand puppet on the teacher's hand takes the children on a discovery of the farm. The story can be told in advance in class. The pictures from the story hang in the stables. You can take the large picture and story book with you on your walk.



## 16 | SEPTEMBER OCTOBER

### From bee to fruit: making applesauce or jam

#### first and second degree

From blossom to apple (puree or jam): learn in a playful way about bees and pollination. In the orchard we taste different apples and other fruit. The children pick the apples themselves, which they then use to make tasty apple compote or jam. They can take their homemade jam home .



### From vegetable garden to soup

#### first and second degree

What grows underground and what grows above the ground? What do vegetables look like before they are in the store ? The children themselves harvest vegetables from the vegetable garden and prepare delicious soup. Tasty!



## OCTOBER | 17

### Food and knowledge

#### daytime activity for fourth, fifth and sixth grade from 12 to 30 October.

With the harvest from our vegetable garden, we prepare a vegetarian meal together. Food, we do it every day. Yet we know little about our food. How many distance does our food travel before it reaches our plate? How much soil does it take to grow our food? What about waste and leftovers?

About food and conscience.

## 18 | NOVEMBER

### Discovering with the donkey

second toddler, third toddler and first grade from 23 November to 4 December

**Attention: this is an outdoor activity**

Did you know that Saint Nicholas sometimes rides a donkey? Can you help take care of and comb the donkey, feed it with self-harvested turnips? Do you also know why Piet is so black? Discover the carbon black charcoal in our baking oven. You can even make a drawing for the Saint!



### Beet lanterns cut

second degree from 9 to 20 November.

**Attention: this is an outdoor activity.**

Did you know that there are many types of beets? Not only fodder beets, but also sugar beets, which humans use. The children learn a lot about the beet, then we make a beet lantern. They take home beautiful, spooky or crazy beetroot lanterns.

## DECEMBER | 19

### From bee to candle

second and third degree

Get to know the special world of bees. Then get started with natural beeswax and make your own candle.



## DECEMBER & JANUARY

### Baking multigrain bread

third degree

We make our own sandwich. This month we are doing something special and we bake a multigrain bread! Discover the wonderful world of cereals!

## 20 | JANUARY

### Birds in winter: making a feed cake from grains and seeds

#### first and second degree

Oops! Do birds have enough food during the winter? How can you help them and what exactly are they eating? We learn about the birds, grains and seeds. As 'icing on the cake' we make a food cake.



## FEBRUARY | 21

### The rabbit

#### third toddler and first grade

What is the difference between a hare and a rabbit? How do you see that a rabbit is scared, and what is best to feed your rabbit? Many questions are answered in this (very) active and playful workshop. You get to know this special four-legged friend through sensory activities and immersion games.



## 22 | FEBRUARY

### Making cheese

#### fourth, fifth and sixth grade

Rennet, starter culture, curd and whey, it sounds like Chinese to the ears. Come and follow the 'cheese making' workshop and learn the cheese language. Make real cheese yourself!



## MARCH | 23

### Chicken and egg

#### first and second degree • half or full day

Which came first, the chicken or the egg? Meet our chicks and hens. Feel how soft the down is and how sharp the trail. Steal the eggs from the chicken coop yourself and make a tasty scrambled egg or pancake together. If you book for half a day, we will make a giant scrambled egg. If you come all day, we also bake pancakes in the afternoon.



## 24 | APRIL MAY

### Vertical gardening

#### second degree

Feel, smell and taste the most delicious herbs from our garden. Then get started as a real gardener yourself. You decorate your own herb pot and can then plant and sow it.



## APRIL-MAY | 25

### Birth and fertilization

#### third degree

What is the name of a male sheep, the female and the young? How many piglets can a sow give birth? Can a hen lay eggs without a cock? How does fertilization happen and what is AI? We also visit the new-born goats and sheep lambs. It is guaranteed to be a 'fruitful' workshop on everything you ever wondered about animals and their young.





## 26 | MAY

### Sheep Shearing Day

**Thursday 27 May 2021**

On the Sheep Shearing Day you guide your class through the various presentations and woolly workshops. Washing and colouring of the wool, as well as felting, weaving, spinning, knitting and crocheting are demonstrated and tested. The highlight of the day is of course the shearing of the sheep themselves.

Participation is free, everyone is welcome!

FYI : For families and free visitors, there is also Sheep Shearing Afternoon on Sunday 30 May 2021.



## MAY-JUNE | 27

### Bee game

**third toddler, first grade**

**accompanied**

With bee packs on, we are honey bees for a while. We get to know the tasks of the queen, the drones and the workers. We do this while puzzling, building, walking, playing ... Of course we also visit the hives and make time for a taste.



## 28 | JUNE

### Creative with wool

#### first and second grade

From sheep to thread ... Discover the wonderful world of wool! Wash your own wool to make a nice craft project afterwards .



### Wool weaving

#### third grade • full day

'Wool to the next level!' You will learn everything from sheep to thread on this day . But we go one step further: you also learn to weave in the old way!

## JUNE | 29

### Water! New

#### third degree

An interactive workshop about and with water. Discover how (much) the farm animals drink, create your own water-saving garden and get the jitters from our water creatures. A fantastic activity!



Contract No AGRI-2019-409 supported by the European Union contributed to the results presented in this document. The opinions expressed are those of the contractor only and do not represent the Contracting Authority's official position.



---

Prepared in the framework of the 'Preparatory Action on Smart Rural Areas  
in the 21<sup>st</sup> Century' project funded by the:

